

Brumby Engineering College

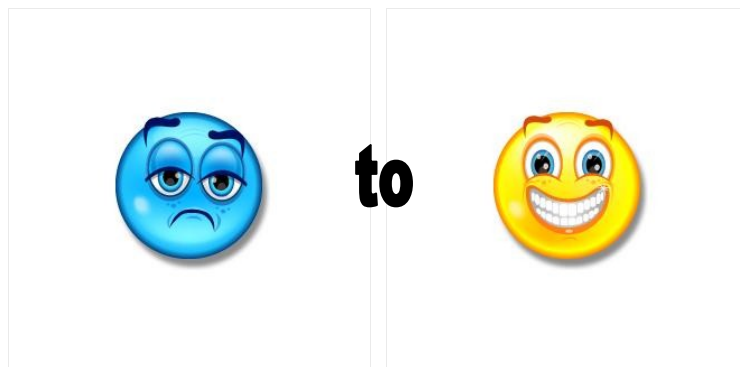
Anti – bullying Policy



(Approved and adopted 19th November 2007)

(Reviewed November 2009)

(Next Review Date November 2012)



TURN THAT FROWN UPSIDE DOWN

This Policy has been developed and implemented in consultation with the whole school community including pupils, parents/carers, staff, governors and partner agencies at the Education Development Centre on 19th November 2007. It reflects the content of the North Lincolnshire anti-bullying strategy which can be found on the North Lincolnshire Website

www.northlincs.gov.uk

What is bullying?

Bullying is behaviour which deliberately makes another person feel uncomfortable, distressed or threatened.

Bullying is repeated over time.

Bullying makes those being bullied feel powerless to defend themselves.

Why are we against bullying?

'Every Child Matters'..... Because:

everyone has the right to feel welcome, secure and happy

we should treat everyone with consideration

if bullying happens it will be dealt with quickly and effectively

it is important to tell someone

bullying of any kind is unacceptable at our school.



What types of bullying are there?

- Emotional (being unfriendly, excluding, tormenting, threatening behaviour)
- Verbal (name calling, sarcasm, spreading rumours, teasing)
- Physical (pushing, kicking, hitting punching or any use of violence)
- Extortion (demanding money/goods with threats)
- Cyber (all areas of the internet, email and internet chatroom misuse.
Mobile threats by text messaging and calls.
Misuse of associated technology i.e. camera and video facilities including those on mobile phones)
- Racist (racial taunts, graffiti, gestures)
- Sexual (unwanted physical contact, sexually abusive comments)
- Homophobic (because of, or focussing on the issue of sexuality)

What are the signs and symptoms of bullying?

A person may indicate by signs of behaviour that they are being bullied. Everyone should be aware of these possible signs and should investigate if the person:

- Is frightened of walking to and from school or changes route
- Doesn't want to go on the school/public bus
- Begs to be driven to school
- Changes their usual routine
- Is unwilling to go to school (school phobic)
- Begins to truant
- Becomes withdrawn, anxious or lacking in confidence
- Becomes aggressive, abusive, disruptive or unreasonable
- Starts stammering
- Threatens or attempts suicide
- Threatens or attempts self harm
- Threatens or attempts to run away
- Cries themselves to sleep at night or has nightmares
- Feels ill in the morning
- Performance in school work begins to drop
- Comes home with clothes torn, property damaged or 'missing'
- Asks for money or starts stealing money
- Has dinner or other monies continually 'lost'
- Has unexplained cuts or bruises
- Comes home 'starving'
- Bullying others
- Changes in eating habits
- Is frightened to say what is wrong
- Afraid to use the internet or mobile phone
- Nervous or jumpy when a cyber message is received
- Gives improbably excuses for their behaviour

Why do People Bully?

People bully for different reasons.

The reason could be:

- To feel powerful
- Jealousy
- To feel good about themselves
- To be in control
- Because they want something (attention, possession or friends)
- There is domestic violence at home
- They enjoy the power
- To look good in front of other people
- To feel popular
- Because of peer pressure
- To be big/clever
- For fun
- They are being or have been bullied themselves
- They see and pick on an easy target (small, won't tell anyone, lonely or different in some way)
- Because they are unhappy at home



What are the signs and symptoms of bullying?

- “don’t want to be here”
- Want to feel safe
- Property missing/broken quite a lot
- Scared of going places on your own, e.g. dinner hall, toilets, playground, to and from school, clubs
- Skipping school
- Changing how they look
- Scared/nervous when using their phone or computer
- Takes away your personality
- Not being themselves

Worried, sad, bad about themselves, shaky, nervous,
Frightened, tired, physically ill, jumpy, lonely

MIGHT START TO.....

Be a bully, nasty or cross, steal, hurt themselves,
rude, skip food or eat more, do something they wouldn’t usually do,
stop doing school work well or at all.

They won’t say why these things are happening to them.

It’s not your fault!!

How can we prevent bullying?

All schools should foster a clear understanding that bullying, in any form, is not acceptable. This can be done by:

- Developing an effective anti-bullying policy and practice. The school will then become a safer and happier environment, with consequent improvements in attitudes, behaviour, and relationships and with a positive impact on learning and achievement.
- Regular praise of positive and supportive behaviour by all staff.
- Work in school which develops empathy and emotional intelligence (SEAL)
- Any incidents treated seriously and dealt with immediately.
- Links relating to other relevant Policies - Safeguarding/Child Protection/Equality/Diversity/Behaviour.

Why is it important to respond to bullying?

Bullying Hurts!

Everybody has the right to be treated with respect.
Everybody has the right to feel happy and safe.
No-one deserves to be a victim of bullying.
Bullies need to learn different ways of behaving.

Our school will respond promptly and effectively to reported incidents of bullying.

Where does bullying happen?

Bullying does not just happen in school. It can happen anywhere including:-

On the journey to school by bus



Walking in the street



In the Park



Playing outside



Clubs and Leisure Activities



In extended school and after school activities



In the home

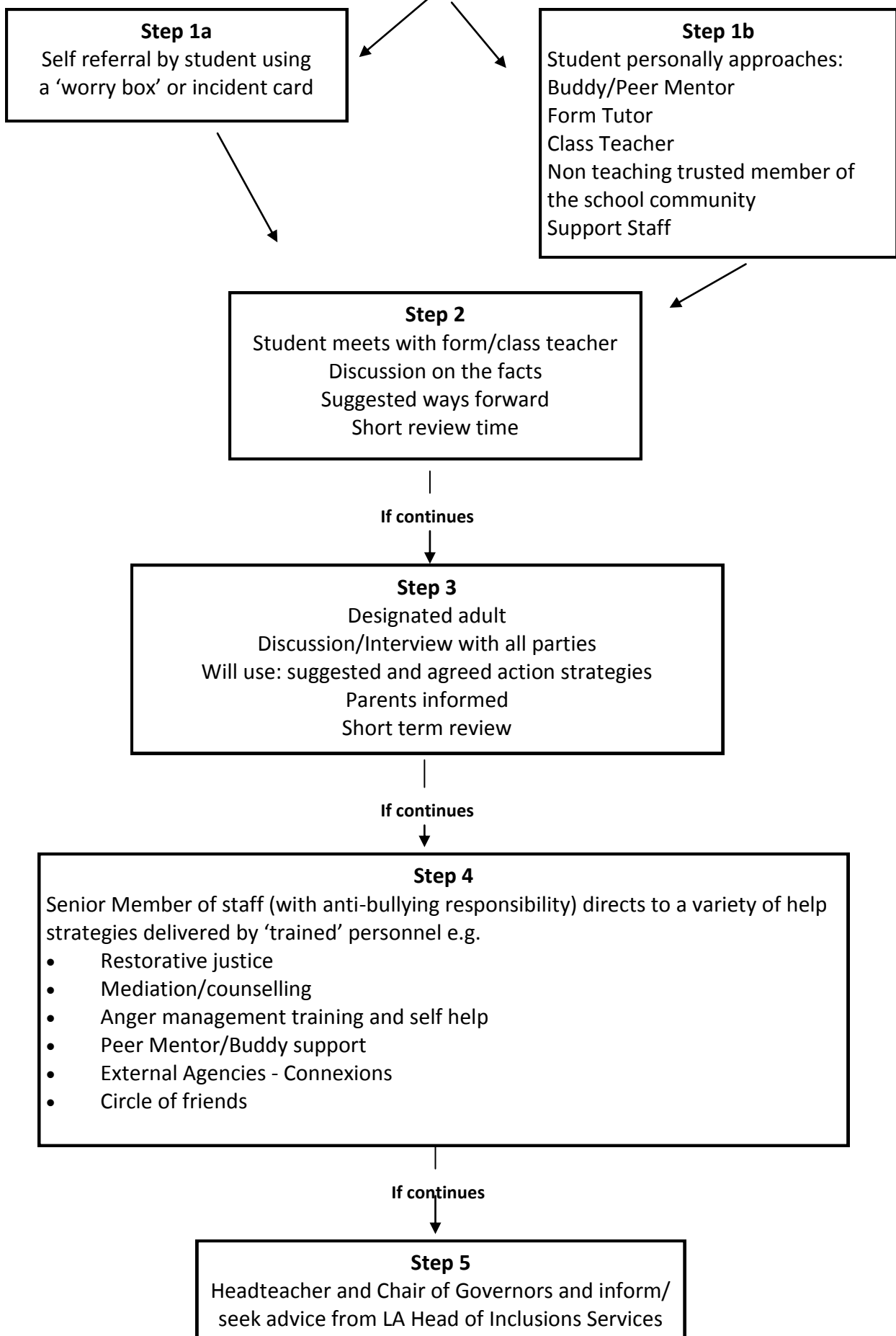


DO NOT BE A BYSTANDER
TELL AN ADULT
BULLYING IS EVERYBODY'S BUSINESS

RECOMMENDED PROCEDURES IN SCHOOL FOR REPORTING BULLYING

PATHWAYS OF HELP

Child is bullied



Support Agencies

Anti-bullying Alliance - the alliance brings together over 60 organisations into one network with the aim of reducing bullying. Their website has a parent section with links to recommended organisations who can help with bullying issues

www.anti-bullyingalliance.org.uk

Kidscape

www.kidscape.org.uk

02077303300

Childline - advice and stories from children who have survived bullying
08000 1111

Bullying on line

www.bullying.co.uk

Parentline Plus - advice and links for parents www.parentlineplus.org.uk
08088002222

Parents Against Bullying
01928 576152

Useful sources of information

Stonewall - the gay equality organisation founded in 1989. Founding members include Sir Ian McKellen www.stonewall.org.uk

Cyberbullying.org - one of the first websites set up in this area, for young people, providing advice around preventing and taking action against cyberbullying. A Canadian based site
www.cyberbullying.org

Chatdanger - a website that informs about the potential dangers online (including bullying), and advice on how to stay safe while chatting www.chatdanger.com

Think U Know - the Child Exploitation and Online Protection Centre (CEOP), has produced a set of resources around internet safety for secondary schools www.childnet-int.org/kia/parents

ACKNOWLEDGEMENT

Thank you to the following schools for their contributions:

Berkeley Junior School

Bottesford Infant School

Brigg Primary School

Brumby Engineering College

Castledyke Primary School

Crosby Primary School

Foxhills Technology College

Frederick Gough School

Frodingham Infant School

Hibaldstow Primary School

Holme Valley Primary School

Huntcliff School

John Harrison CE Primary School

Lincoln Gardens Primary School

Melior Community College

St. Bernadette's RC Primary School

St. Hugh's School

Winterton Junior School